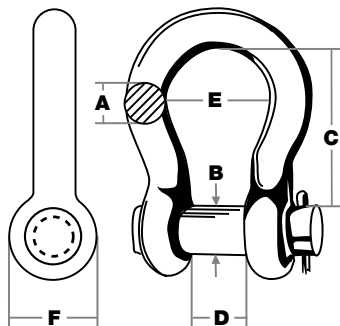


## ROUND PIN ANCHOR SHACKLES

- Drop forged.
- Hot dipped galvanized.
- Meets design requirements of Federal Specification RR-C-271 Type IV A Grade A Class 1.
- See Warnings “**Shackles**” on Page 7 for proper use and selection.



Indusco Part #	A Nominal Size	B Pin Dia.	C	D	E	F	Weight Each	Working Load Limit*
751 00926	1/4	.31	1.13	.47	.78	.69	.12	1,000
751 00927	5/16	.38	1.25	.53	.84	.81	.19	1,500
751 00928	3/8	.44	1.50	.66	1.03	.97	.30	2,000
751 99999	7/16	.50	1.75	.72	1.16	1.13	.38	3,000
751 01036	1/2	.63	2.00	.81	1.31	1.31	.72	4,000
751 01035	5/8	.75	2.50	1.06	1.69	1.56	1.50	6,500
751 01037	3/4	.88	3.00	1.25	2.00	1.88	2.30	9,500
751 01116	7/8	1.00	3.25	1.44	2.25	2.13	3.50	13,000
751 01040	1	1.13	3.75	1.69	2.50	2.38	5.00	17,000
751 01039	1-1/8	1.25	4.25	1.81	2.94	2.63	6.97	19,000
751 01038	1-1/4	1.38	4.50	2.00	3.25	3.00	9.70	24,000
751 01041	1-3/8	1.50	5.25	2.25	3.50	3.25	13.00	27,000
751 01226	1-1/2	1.62	5.75	2.75	3.87	3.50	17.30	34,000
751 01221	1-3/4	2.00	7.00	2.87	4.75	4.00	29.00	50,000
751 01121	2	2.25	7.75	3.25	5.75	4.88	44.00	70,000

\*WORKING LOAD LIMIT IS BASED ON A DESIGN FACTOR OF 5:1

CALL **1-800-727-0665** TO PLACE AN ORDER  
[www.induscowirerope.com](http://www.induscowirerope.com)

**WARNING** Never exceed working load limit.

See pages 4 - 10 for important safety information.  
 All measurements/units listed are in inches/pounds unless otherwise noted.