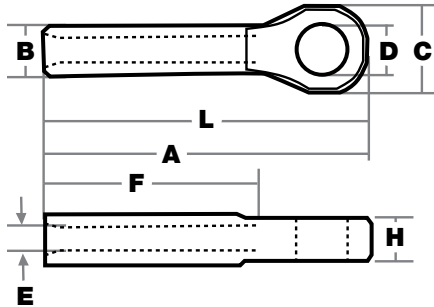


CLOSED SWAGE SOCKETS



- Drop forged.
- Self-colored.
- In accordance with ASME B30.9, all slings terminated with swage sockets shall be proof-tested.
- When attached properly, these swages will meet 100% of the wire rope rated capacity.

Indusco Part #	Trade Size	A	B	C	D	E	F	H	L	Weight Each
787 00141	1/4	4.28	.50	1.38	.76	.27	2.19	.50	3.50	.33
787 00146	5/16	5.42	.77	1.62	.88	.34	3.25	.68	4.50	.75
787 00151	3/8	5.42	.78	1.62	.88	.41	3.25	.68	4.50	.72
787 00153	7/16	6.88	1.01	2.00	1.07	.49	4.31	.87	5.75	1.42
787 00156	1/2	6.88	1.01	2.00	1.07	.55	4.31	.87	5.75	1.42
787 00173	9/16	8.59	1.27	2.38	1.28	.61	5.38	1.14	7.25	2.92
787 00161	5/8	8.59	1.27	2.38	1.28	.68	5.38	1.14	7.25	2.85
787 00166	3/4	10.25	1.56	2.88	1.49	.80	6.44	1.33	8.63	5.00
787 00171	7/8	11.87	1.72	3.12	1.73	.94	7.50	1.53	10.09	6.80
787 00176	1	13.56	2.00	3.62	2.11	1.07	8.63	1.78	11.50	10.40
787 00181	1-1/8	15.03	2.25	4.00	2.37	1.19	9.75	2.03	12.75	14.82
787 00186	1-1/4	16.94	2.53	4.50	2.62	1.34	10.81	2.25	14.38	21.57
787 00191	1-3/8	18.59	2.81	5.00	2.62	1.46	11.88	2.29	15.75	28.54
787 00196	1-1/2	20.13	3.08	5.38	2.87	1.59	12.94	2.56	17.00	38.06
787 00201	1-3/4	23.56	3.40	6.25	3.63	1.87	15.06	3.08	20.00	51.00
787 00202	2	27.13	3.94	7.25	3.88	2.12	17.06	3.31	23.00	89.25

WEIGHTS AND DIMENSIONS MAY VARY DUE TO MANUFACTURER TOLERANCES

CALL 1-800-727-0665 TO PLACE AN ORDER
www.induscowirerope.com

⚠ WARNING Never exceed working load limit.

*See pages 4 - 10 for important safety information.
 All measurements/units listed are in inches/pounds unless otherwise noted.*