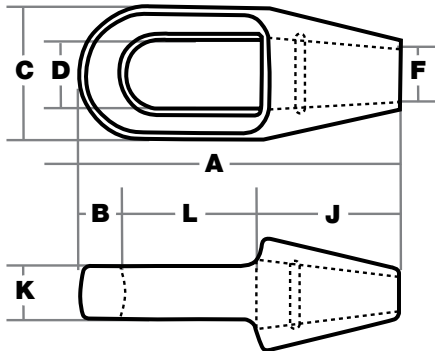


## CLOSED SPELTER SOCKETS



- Hot dipped galvanized.
- While attaching spelter sockets to wire rope, it is extremely important to follow recommended procedures such as outlined by the American Iron and Steel Institute.
- Drop forged up to 1-1/2 trade size. 1-5/8 and larger are cast alloy steel.
- Meets performance requirements FED SPEC RR-550-D Type A, unless stated otherwise.
- In accordance with ANSI B30.9, all slings terminated with spelter sockets shall be proof-tested.
- When attached properly, these sockets will meet 100% of the wire rope rated capacity.

Indusco Part #	Trade Size	A	B	C	D	F	J	K	L	Weight Each
787 00001	1/4	4.50	.50	1.50	.88	.38	2.25	.50	1.75	.50
787 00006	5/16 to 3/8	4.88	.63	1.69	.94	.50	2.25	.69	2.00	1.30
787 00011	7/16 to 1/2	5.44	.69	2.00	1.13	.56	2.50	.88	2.25	1.50
787 00016	9/16 to 5/8	6.31	.81	2.63	1.38	.69	3.00	1.00	2.50	2.50
787 00021	3/4	7.56	1.06	3.00	1.63	.81	3.50	1.25	3.00	4.25
787 00026	7/8	8.75	1.25	3.63	1.88	.94	4.00	1.50	3.50	7.25
787 00031	1	9.88	1.38	4.13	2.25	1.13	4.50	1.75	4.00	10.50
787 00036	1-1/8	11.00	1.50	4.50	2.50	1.25	5.00	2.00	4.50	14.25
787 00043	1-1/4 to 1-3/8	12.13	1.63	5.00	2.75	1.50	5.50	2.25	5.00	19.75
787 00046	1-1/2	13.94	1.94	5.38	3.13	1.63	6.00	2.50	6.00	29.20
787 00051	1-5/8	15.13	2.13	5.75	3.25	1.75	6.50	2.75	6.50	36.00
787 00056	1-3/4	17.25	2.19	6.75	3.75	2.00	7.50	3.00	7.56	57.25
787 00061	2 to 2-1/8	19.87	2.44	7.63	4.38	2.25	8.50	3.25	8.81	79.00
787 00066	2-1/4 to 2-3/8	21.50	2.75	8.50	5.00	2.63	9.00	3.63	9.75	105.00
Larger sizes available up to 4"										

WEIGHTS AND DIMENSIONS MAY VARY DUE TO MANUFACTURER TOLERANCES

**CALL 1-800-727-0665 TO PLACE AN ORDER**  
[www.induscowirerope.com](http://www.induscowirerope.com)

**⚠ WARNING** Never exceed working load limit.

See pages 4 - 10 for important safety information.  
 All measurements/units listed are in inches/pounds unless otherwise noted.